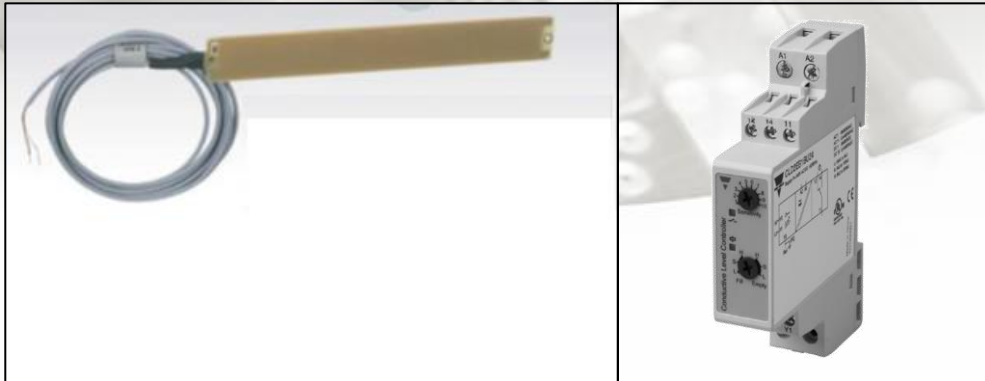




Datablad fukt-sensor type VVA 3 med alarmrelè type CLD2EB1BU24



Fukt sensor VVA 3

VVA 3

25 x 200 mm festes med skrue eller tape, 2 m kabel. Sensorens funksjon er basert på faldende motstand, som skyldes fuktighet som legger seg på føleren/sensorellementet. Tørrsensorens motstandsverdi er ca. 300 k Ω .

Med visse kontrollsystemer er det mulig at bruke disse uten relèer.

CLD2EB1BU24 2-point level controller Type CL with potentiometer



Product Description

μ -Processor based level controller for liquids with a wide sensitivity range (like sewage water, chemicals, salt water etc.).

Max./min. control of charging/discharging. The sensitivity is adjustable by means of the potentiometer.
1 x 8 A SPDT relay output.

- Conductive level controller
- Sensitivity adjustment from 250 Ω to 500 K Ω
- For filling or emptying applications
- Low-voltage AC electrodes
- Easy installation on DIN rails
- Rated operational voltage: 24 to 240 VAC/DC
- Output 1 x 8 A / 250 VAC SPDT relay
- LED indication for: Output ON and Power ON

Type Selection

Mounting	Relay	Ordering no. Supply: 24-240 VAC/DC
DIN-rail	SPDT	CLD2EB1BU24

Specifications

Rated operational voltage (U_B) Pin 2 & 10 Rated insulation voltage Rated impulse withstand voltage	20 to 265 VAC/DC, 45 to 65 Hz <2.0 kVAC (rms) 4 kV (1.2/50 μ s) (line/neutral)	Dielectric voltage	>2.0 KVAC (rms) (contacts / electronics)
Rated operational power 230 VAC/DC supply 24 VAC/DC supply	2 W 1 W	Rated impulse withstand volt.	4 kV (1.2/50 μ S) (contacts / electronics) (IEC 664)
Delay on operate (t_v)	< 2 s	Operating frequency (f) Relay output	1 Hz
Outputs Rated insulation voltage	250 VAC (rms) (cont./elec.)	Response time OFF-ON (t_{on}) ON-OFF (t_{off})	1 s 1 s
Relay Rating (AgCdO) Resistive loads	μ (micro gap) AC1 8 A / 250 VAC (2500 VA) DC1 1 A / 250 VDC (250 W) or 10 A / 25 VDC (250 W)	Environment Overvoltage category Degree of protection Pollution degree	III (IEC 60664) IP 20 (IEC 60529, 60947-1) 2 (IEC 60664/60664A, 60947-1)
Small induct. Loads	AC15 0,4 A / 250 VAC DC13 0,4 A / 30 VDC	Temperature Operating Storage	-20° to +50°C (-4° to + 122°F) -40° to +85°C (-40° to +185°F)
Mechanical life (typical)	$\geq 30 \times 10^6$ operations @ 18'000 imp/h	Housing material	PA66, light grey
Electrical life (typical)	AC1 > 250'000 operations	Weight AC/DC supply	125 g
Level probe supply	Max. 5 VAC	UL Approvals	cULus UL508
Level probe current	Max. 2 mA	CE marking	Yes
Sensitivity Ranges L (Low sensitivity) Ranges S (Standard sensitivity) Ranges H (High sensitivity)	250 Ω to 500K Ω Factory settings standard range "S" 100K Ω 250 Ω to 5 K Ω , $C_F^* = 4.7$ nF 5 K Ω to 100 K Ω , $C_F^* = 2.2$ nF 50 K Ω to 500 K Ω , $C_F^* = 1.0$ nF		

* C_F = maximum Cable Capacitance

www.socotec.no

Telefon hovedkontor i Bergen: 55 50 60 70

Mode of Operation

Connection cable

2, 3, or 4 conductor PVC cable, normally screened. Cable length: max. 100 m. The resistance between the cores and the ground must be at least 500k. Normally, it is recommended to use a screened cable between probe and controller, e.g. where the cable is placed in parallel to the load cables (mains). The screen has to be connected to the reference port (Ref) must be connected to Protective Earth (PE).

Example 1

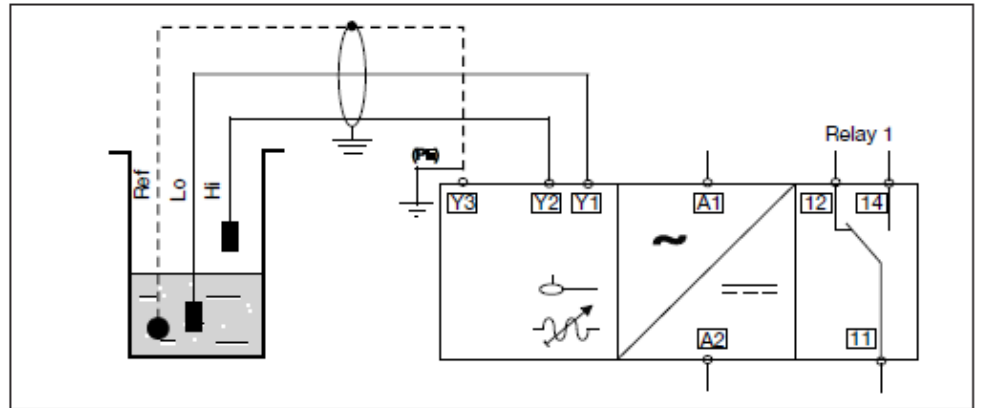
The diagram shows the level control connected as max. and min. control. The relays react to the low alternating current created when the

electrodes are in contact with the liquid. The reference (Ref) must be connected to the container or if the container consists

of a non-conductive material, to an additional electrode. (To be connected to pin Y3). (In the diagram this electrode is shown by the dotted line).

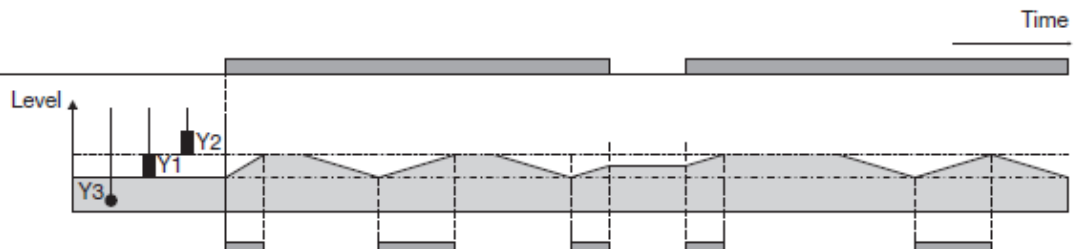
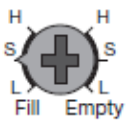
NB!

If only one level detection is required - interconnect the two inputs Y1 and Y2.



Filling

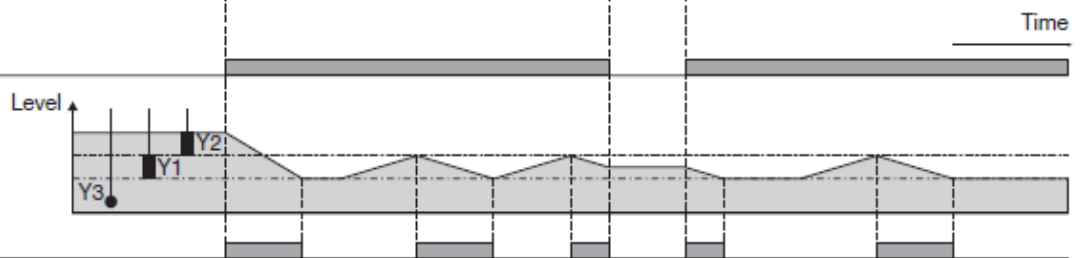
Power supply ON



Relay ON [11-14]

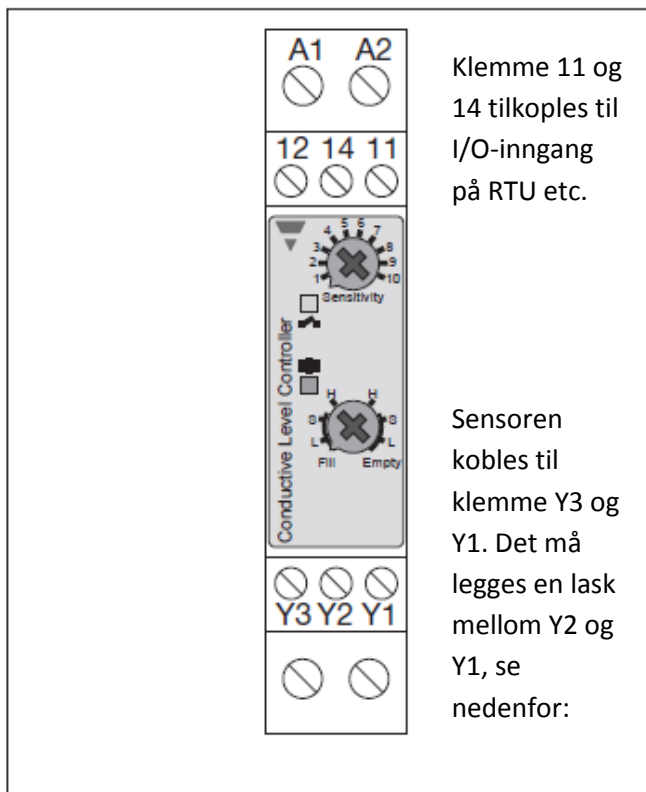
Emptying

Power supply ON

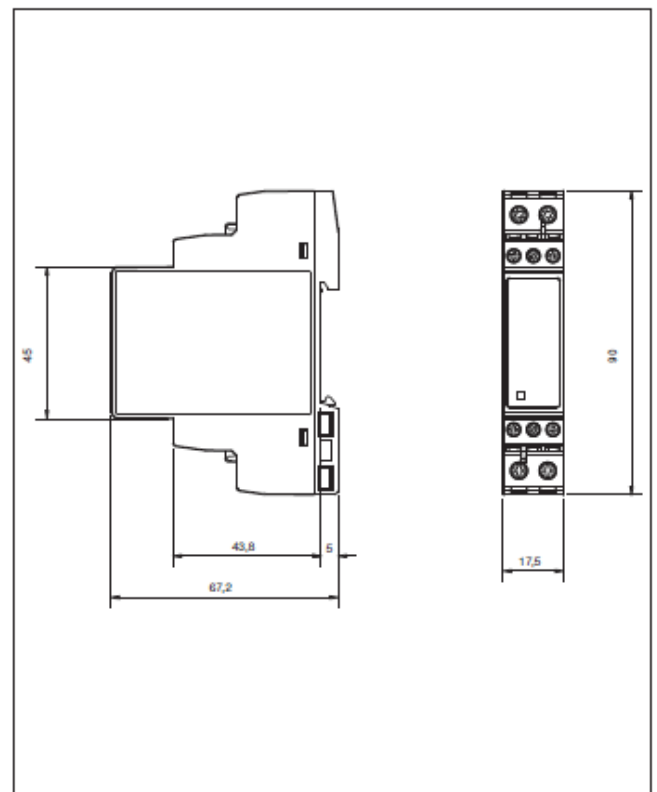


Relay ON [11-14]

Wiring Diagram



Dimension Drawings



Delivery Contents

- Amplifier
- Packaging: Carton box
- Manual

