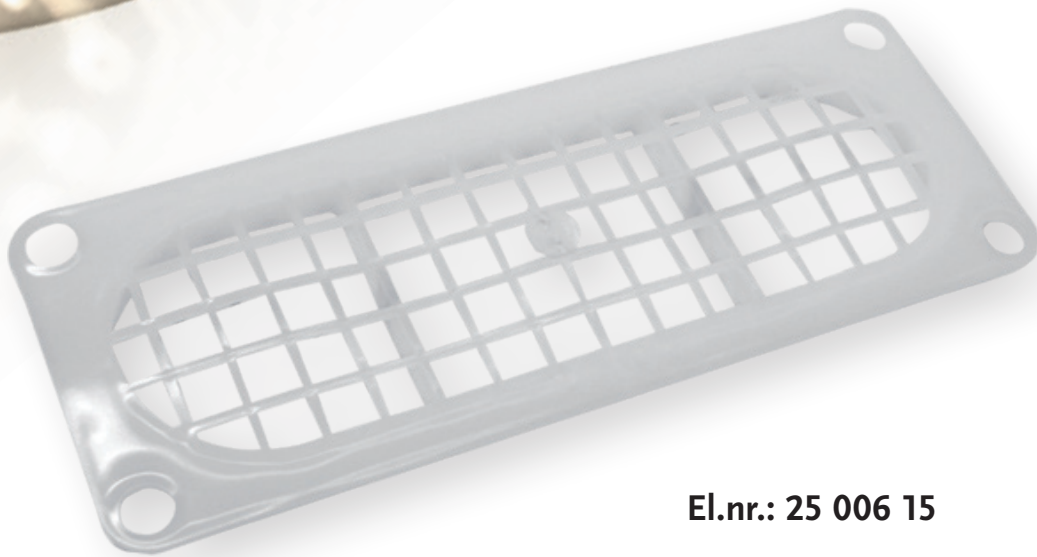




**SCANDINAVIAN
ELECTRIC AS**

JTLC-1



El.nr.: 25 006 15

Code	JTLC-1
Material	Polypropeeni PP
Color	Natural white
Measurements	C-hole: 210mm x 79mm Fastening hole 10mm Fasteningholes distance 193mm / 62mm
Temperature	-40C - +130C
Electricalnumber	34 630 25
GTIN-code	6410034630250
Supplier	HT Hi Tech Polymers Oy
Packing size	80 pcs

EXCELLENCE IN ELECTRIC

Hovedkontor Bergen

Tlf. 55 50 60 70 - Faks 55 50 60 99 se.mail@scel.no - www.scel.no